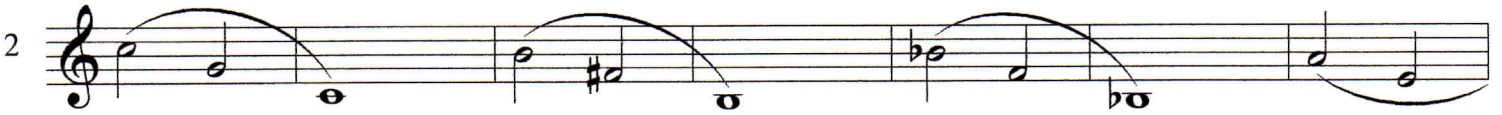
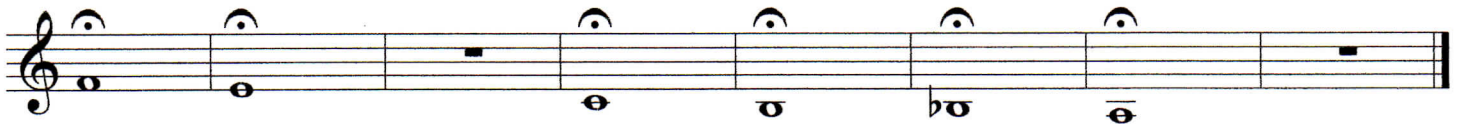


Florida Brass Warmup

Jeff Mitchell



Florida Brass Warmup

The musical score for "Florida Brass Warmup" is written in 4/4 time and consists of seven staves of music. The key signature is one flat (B-flat major or D minor). The score is divided into measures, with measure numbers 4, 6, 11, 16, 20, 24, and 28 marked at the beginning of their respective staves. The music features a variety of rhythmic patterns, including eighth-note runs, quarter-note patterns, and half-note phrases, often grouped with slurs. The final measure of the piece is marked with a double bar line and the number 10.

Florida Brass Warmup

7 31

Musical staff 7, measures 31-37. The staff is in treble clef with a 4/4 time signature. It contains a sequence of eighth notes and quarter notes, with some notes beamed together. The key signature changes from one sharp (F#) to one flat (Bb) between measures 35 and 36. Phrasing slurs are placed over groups of notes.

38

Musical staff 7, measures 38-44. Continuation of the musical sequence from the previous staff, maintaining the same rhythmic and melodic patterns.

8 45

Musical staff 8, measures 45-51. Continuation of the musical sequence, featuring similar rhythmic and melodic motifs.

52

Musical staff 8, measures 52-58. Continuation of the musical sequence, showing consistent rhythmic and melodic development.

9 59

Musical staff 9, measures 59-62. Continuation of the musical sequence, with notes extending to the top of the staff.

63

Musical staff 9, measures 63-66. Continuation of the musical sequence, ending with a double bar line.

10 67

Musical staff 10, measures 67-72. Continuation of the musical sequence, featuring a key signature change to two flats (Bb and Eb) between measures 71 and 72.

73

Musical staff 10, measures 73-79. Continuation of the musical sequence, ending with a double bar line.