

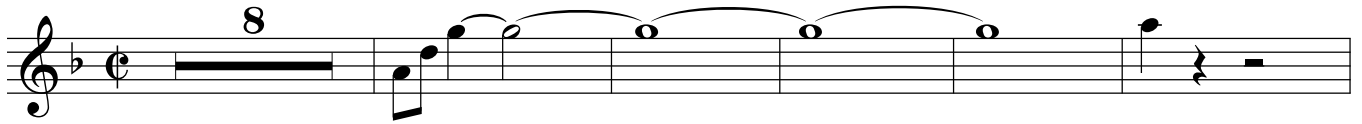
Baritone (T.C.) 1

MOORSIDE MARCH

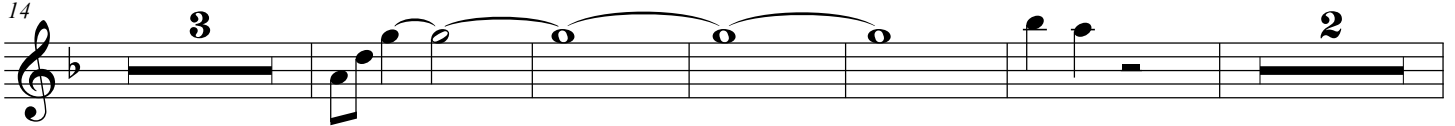
florida brass 22

holst
venezia

9



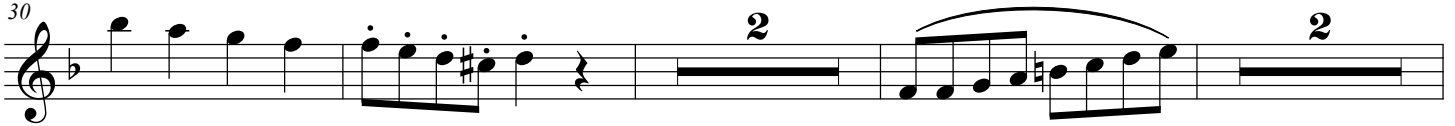
17



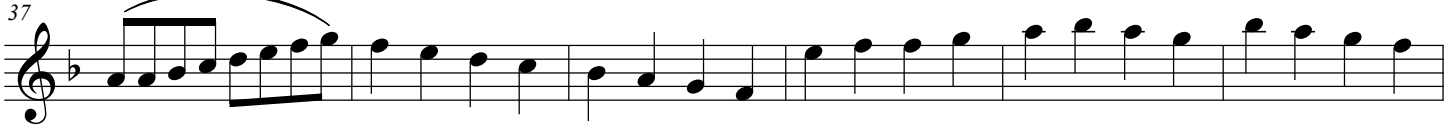
26



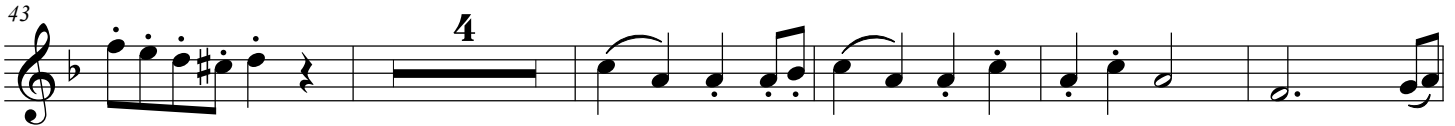
35



38



48



54



58



MOORSIDE MARCH

70

66 **4**

76

86

84

95

92

102

101

108

115 *slower*

114

123

faster

121

131

129

MOORSIDE MARCH

138

Musical notation for Moorside March, starting at measure 138. The notation is on a single staff with a treble clef and a key signature of one flat. It consists of 8 measures. Measure 1: A half note G4 with a fermata. Measure 2: A quarter note G4, a quarter rest, a quarter note G4, a quarter rest. Measure 3: A quarter note G4, a quarter rest, a quarter note G4, a quarter rest. Measure 4: A quarter note G4, a quarter rest, a quarter note G4, a quarter rest. Measure 5: A quarter note G4, a quarter rest, a quarter note G4, a quarter rest. Measure 6: A quarter note G4, a quarter rest, a quarter note G4, a quarter rest. Measure 7: A quarter note G4, a quarter rest, a quarter note G4, a quarter rest. Measure 8: A quarter note G4, a quarter rest, a quarter note G4, a quarter rest.