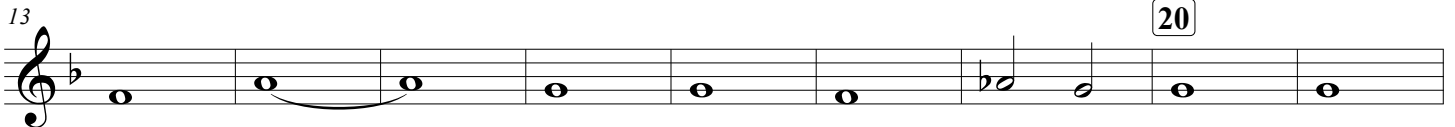


# MACARTHUR PARK

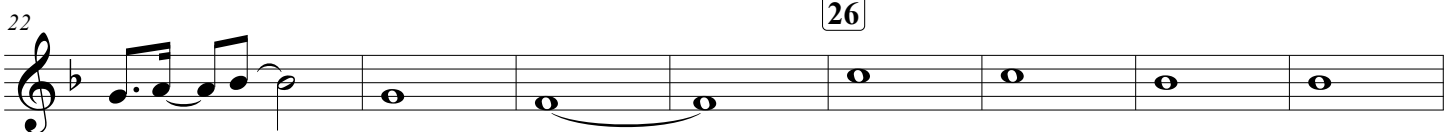
webb  
burns/venezia



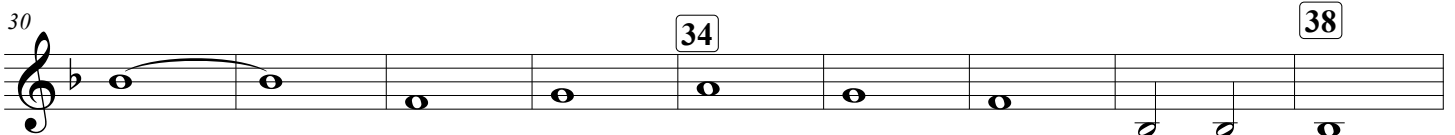
9



20

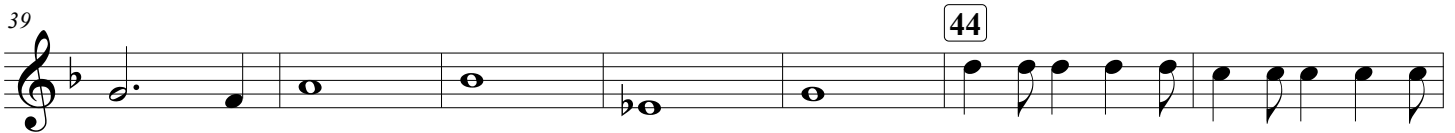


26



34

38



44



50



51

56



60



64

65



69



76

78



83



Detailed description: This image shows a page of musical notation for the piece 'MacArthur Park'. The page is numbered '2' in the top left corner. The title 'MACARTHUR PARK' is centered at the top. The music is written in a single staff with a treble clef and a key signature of one flat (Bb). The piece begins at measure 56, which is marked with a box containing the number '56'. The first four measures (56-59) feature a complex, rhythmic pattern with changing time signatures: 3/4, 2/4, 3/4, 2/4, and 4/4. From measure 60, the time signature changes to 4/4. Measure 64 is marked with a box containing '64', and measure 65 is marked with a box containing '65'. The notation includes various note values, rests, and dynamic markings. The piece concludes at measure 86, which is marked with a box containing '83' and a double bar line.